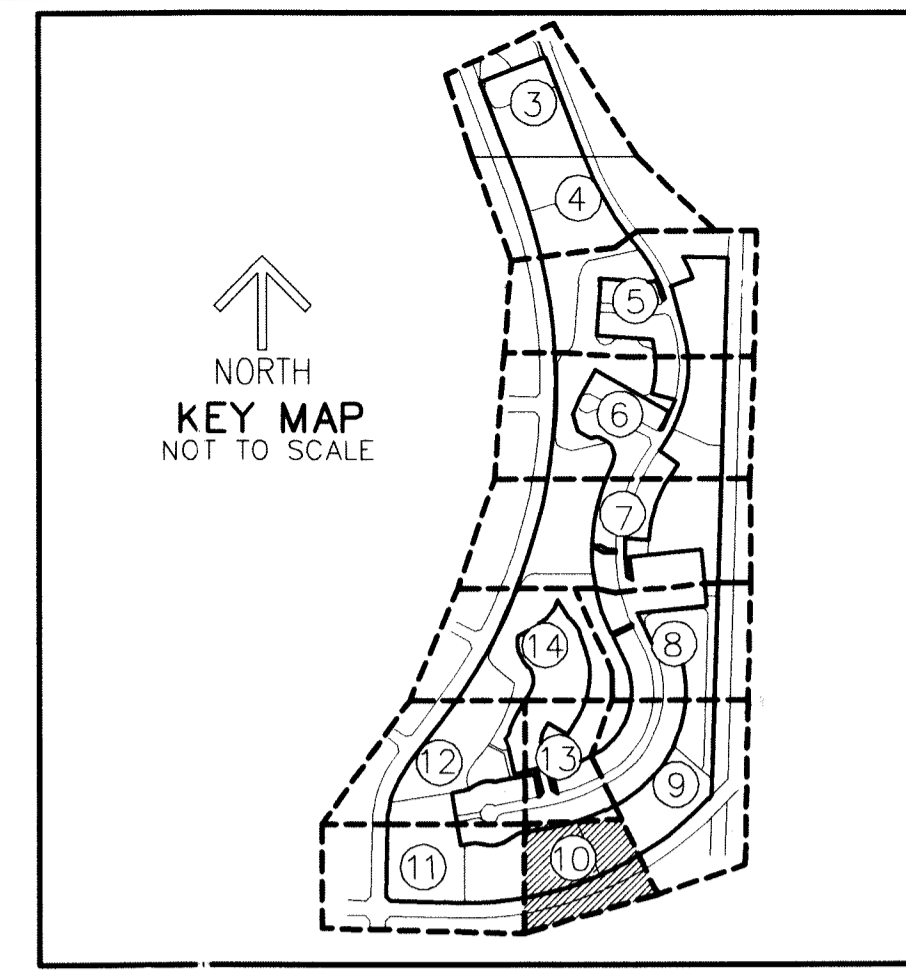


THIS INSTRUMENT PREPARED BY  
 DAVID P. LINDLEY  
 OF  
**CAULFIELD and WHEELER, INC.**  
 SURVEYORS - ENGINEERS - PLANNERS  
 7900 GLADES ROAD, SUITE 100  
 BOCA RATON, FLORIDA 33434 - (561)392-1991  
 CERTIFICATE OF AUTHORIZATION NO. LB3591  
 OCTOBER-2017

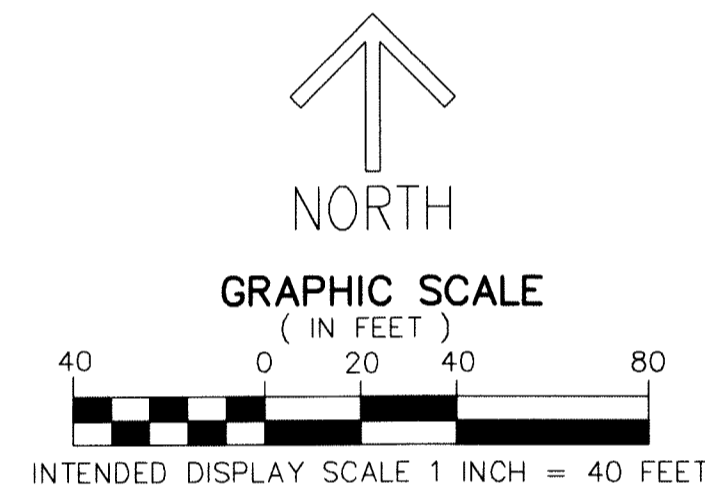
# WINDING TRAILS

BEING A REPLAT OF PORTIONS OF PARCELS F, H, J, K, M AND T, LAKEFIELD OF THE LANDINGS AT WELLINGTON P.U.D. - PLAT 2A,  
 AS RECORDED IN PLAT BOOK 64, PAGES 97 THROUGH 105 OF THE PUBLIC RECORDS OF PALM BEACH COUNTY, FLORIDA,  
 TOGETHER WITH PARCELS D, E, F AND G, LAKEFIELD OF THE LANDINGS AT WELLINGTON P.U.D. - PLAT 2B,  
 AS RECORDED IN PLAT BOOK 63, PAGES 27 THROUGH 31 OF THE PUBLIC RECORDS OF PALM BEACH COUNTY, FLORIDA,  
 LYING IN SECTION 18, TOWNSHIP 44 SOUTH, RANGE 41 EAST, VILLAGE OF WELLINGTON, PALM BEACH COUNTY, FLORIDA



65

SHEET 10 OF 14



**LEGEND/ABBREVIATIONS**

- CL - CENTERLINE
- Δ - DELTA (CENTRAL ANGLE)
- AC - ACRES
- BTE - BRIDLE TRAIL EASEMENT
- CB - LONG CHORD BEARING
- CD - LONG CHORD DISTANCE
- DE - DRAINAGE EASEMENT
- L - ARC LENGTH
- LAE - LIMITED ACCESS EASEMENT
- LB - LICENSED BUSINESS
- LBE - LANDSCAPE BUFFER EASEMENT
- LME - LAKE MAINTENANCE EASEMENT
- LMAE - LAKE MAINTENANCE ACCESS EASEMENT
- MPPE - MULTI PURPOSE PATH EASEMENT
- O.R.B. - OFFICIAL RECORD BOOK
- R - RADIUS
- (R) - INDICATES RADIAL LINE
- SF - SQUARE FEET
- UE - UTILITY EASEMENT
- WSE - WATER AND SEWER EASEMENT
- PRM - DENOTES PERMANENT REFERENCE MONUMENT  
4"x 4" CONCRETE MONUMENT WITH DISK
- PRM - DENOTES PERMANENT REFERENCE MONUMENT  
SET 5/8" IRON ROD WITH PLASTIC CAP  
STAMPED "C&W PRM LB#3591" UNLESS  
OTHERWISE NOTED.

